

NEW LEADER[®]

INSTALLATION INSTRUCTIONS

*Includes AGCO L4000G4, L3220G4, L5034G4,
L2020G4 & L3020G4*

EFFECTIVE 09/2009

Revision A

**HIGHWAY EQUIPMENT COMPANY
1330 76TH AVE SW
CEDAR RAPIDS, IA 52404-7052**

PHONE (319) 363-8281

FAX (319) 632-3081

www.highwayequipment.com

BUILDING THE BEST SINCE 1939

Copyright 2009 Highway Equipment Company, Inc.

TABLE OF CONTENTS

Pump and PTO Requirements 3
 Hydraulic Requirements 3
 Sizing Data Required 3
 Filler Strips..... 4
 Positioning Body..... 4
 Spinner Installation 5
 Side Board Installation..... 5
 Inverted V Installation 5
 Fender Installation..... 5
 Hydraulic Hose Installation..... 6
 Installation Guide 7
 Hydraulic Drain Lines..... 7
 Electrical Connections 8
 Light Installation 8
 Spinner Sensor 8
 Filling Hydraulic System..... 8
 Checking Installation 8



Recommended sequence of installation is:

1. Mounting of PTO and pump drive.
2. Installation of radar (if applicable).
3. Mounting of spreader.
4. Installation of controller and encoder (if applicable).
5. Installation of hydraulic hose and electrical wiring.
6. Installation of optional parts.
7. Filling of hydraulic tanks and lubrication.
8. Checking for leaks and proper functioning.

PUMP AND PTO REQUIREMENTS:

Hydraulic Requirements

Hydraulics		GPM (Gallons per Minute)	Maximum Pressure
L4000 MULTAPPLIER Ready	Spinner & Conveyor	40	3100
	MULTAPPLIER	9	1500
L4000 High Performance	Spinner	40	3100
	Conveyor/ MULTAPPLIER	20/9	3100/1500
L3220G4	Spinner & Conveyor	40	3100
	MULTAPPLIER	9	1500
L5034G4	Spinner	40	3100
	Conveyor	27	3400
L2020G4	Spinner & Conveyor	25	3100
L3020G4	Spinner & Conveyor	40	3100

Sizing Data Required:

Since the amount of material per acre to be spread depends upon the match between pump size, pump speed (which depends upon engine speed and PTO percent), conveyor delivery rate and feedgate opening, it is essential that a correct match between these factors be made. This matching is called "sizing."

Correct sizing requires accurate and complete information.

Engine governed operating speed.

Transmission make and model.

PTO Data

1. Make and Model of PTO.
2. PTO percentage of Engine RPM.
3. Direction of PTO Rotation (Engine Direction or Opposite of Engine Direction).



FILLER STRIPS (L5034G4 ONLY)

NOTICE! Do not weld to truck frame; it may void truck warranty.

A level top surface is necessary for mounting. Add steel shim bars or strips the same thickness as fish plates or other obstructions and as wide as the truck frame channel top flange. Shims must be drilled to clear any rivet or bolt heads.

Units with rubber mounting pads do not require wood filler strips—continue to Positioning Body on next page. Rubber mounting pads may be ordered or follow instructions below if not so equipped.

Hardwood filler strips (not supplied) 1" by 3" (2.5 cm x 7.6 cm) must be installed the full length of the truck frame. Cut filler strips to length and place on truck frame rails. If frame has rivets in top flange, mark position of rivets on filler strips, remove and counterbore for rivet head clearance. Secure filler strips and steel shims (if applicable) to frame top flange by bending anchor clips around them as shown in Figure 2. Attach three anchor clips per steel shim and per wood filler strip. Locate anchor clips between spreader body cross tubes. Attach anchor clips by driving a 1/4" sheet metal screw through clip into wood filler strip as shown in Figure 1.

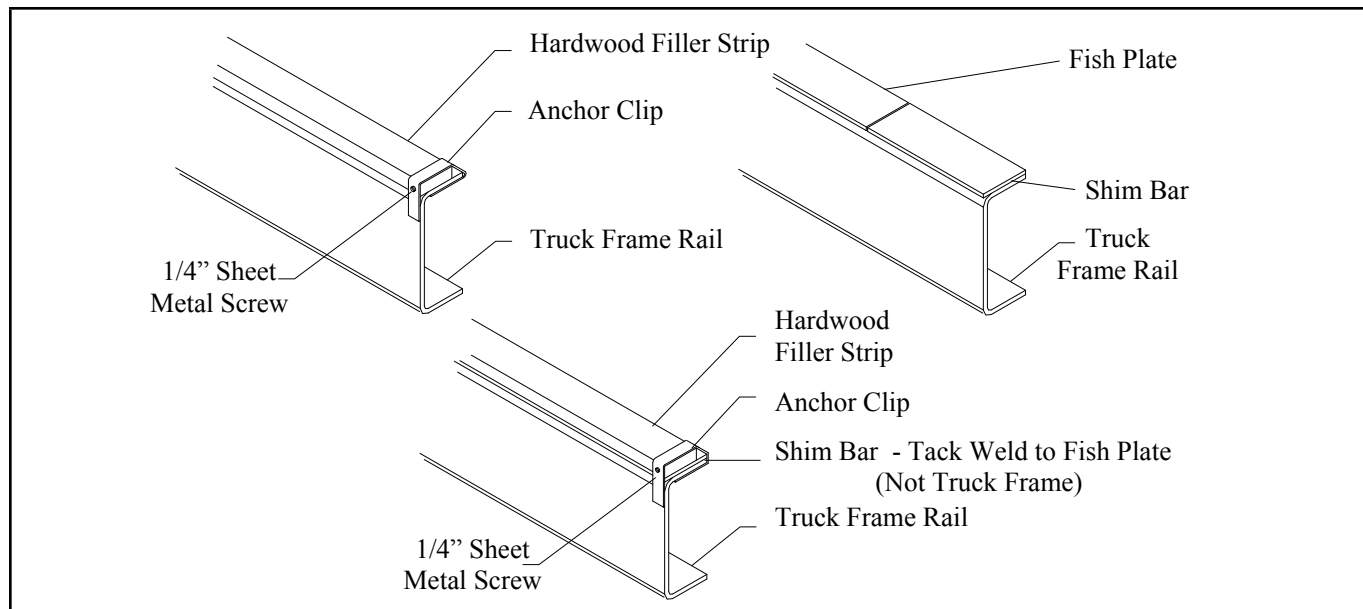


Figure 1 - Wood Filler Strips & Anchor Clips

POSITIONING BODY**WARNING**

Lifting devices used should always meet or exceed OSHA standard 1910.184. Never exceed work load limits or lift equipment over people. Empty spreader before lifting. Loads may shift or fall if improperly supported, causing injury or damage to the unit.

**WARNING**

Keep unit supported until mounting is complete. Unit could slip off chassis, causing injury or damage to unit.

Using a suitable lifting device, lift empty spreader onto truck frame. Position body centrally with respect to truck frame rails and approximately 4" (10.16cm) from rear of cab. Check position of spreader at rear to insure rear mounting angle can be installed on truck frame and centered on rear cross tube.



SPINNER INSTALLATION

See *G4 Spread Pattern* tabbed section in operator's manual for instructions.

SIDE BOARD INSTALLATION (As Applicable)

*For fertilizer use only.

See *Side Board* or *Side Board Mount (Wood)* parts list in operator's manual for illustration.

INVERTED V INSTALLATION (Except L5034G4)

See *Inverted V* parts list in operator's manual for illustration of both typical and high yield installation as applicable.

FENDER INSTALLATION (As Applicable)

Attach fender angles and panels to upper set of holes on spreader body stakes as shown in Figure 2. Do not tighten hardware at this time.

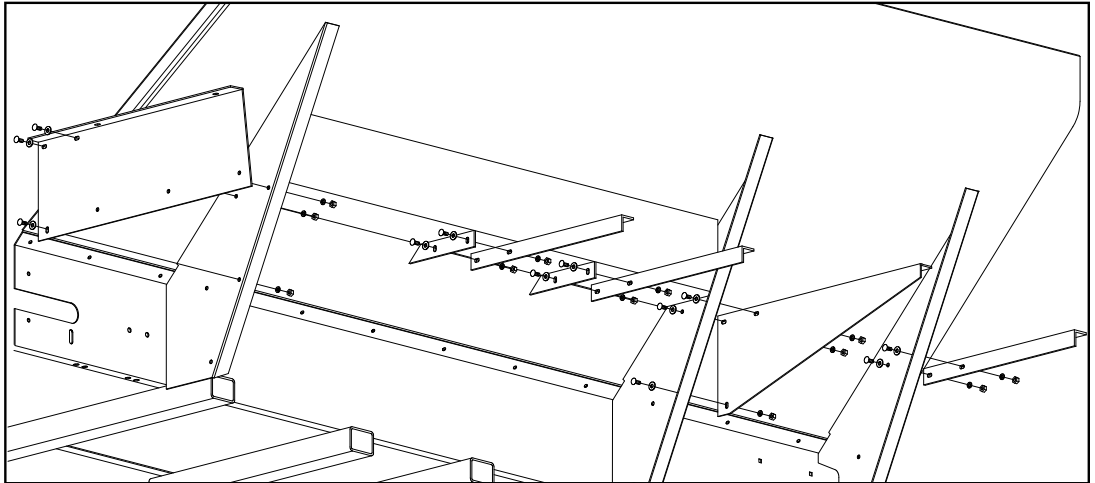


Figure 2 - Fender Angle Installation

Attach fenders on top of angles/panels as shown in Figure 3. Tighten all hardware.

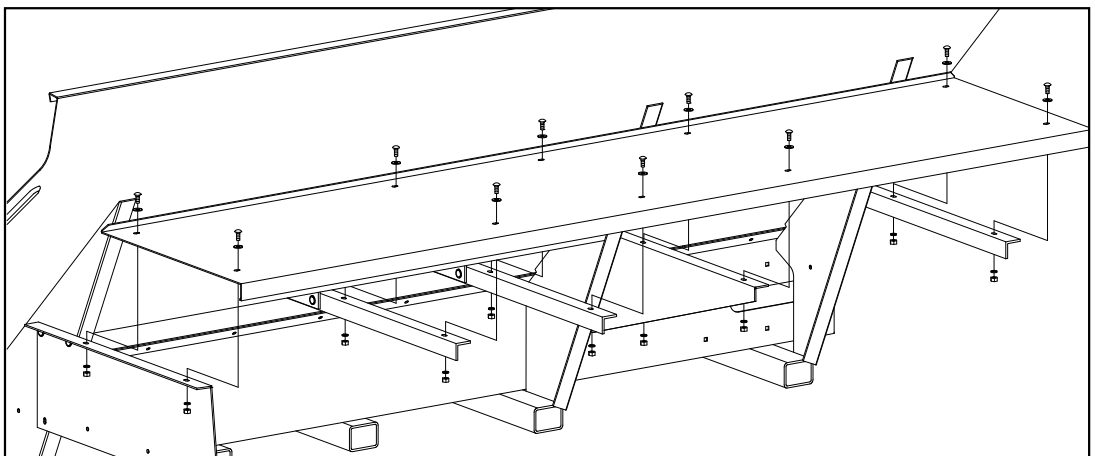


Figure 3 - Fender Installation

HYDRAULIC HOSE INSTALLATION**CAUTION**

All holes in the truck cab walls, floor and firewall for control wires, hoses and cables are to be grommeted, plugged and sealed to prevent entrance of engine fumes, dust, dirt, water and noise.

**CAUTION**

If a threaded connection is tightened too tightly, the fitting or housing into which the fitting is placed could be distorted and an unstoppable leak could occur.

Determine pressure port of pump. Install pressure hose into this port as shown in Figure 4. Connect suction hose to opposite port and to tank outlet on reservoir. Use plastic tie straps as necessary to support hoses so they will not catch on field obstructions or contact hot or moving parts.

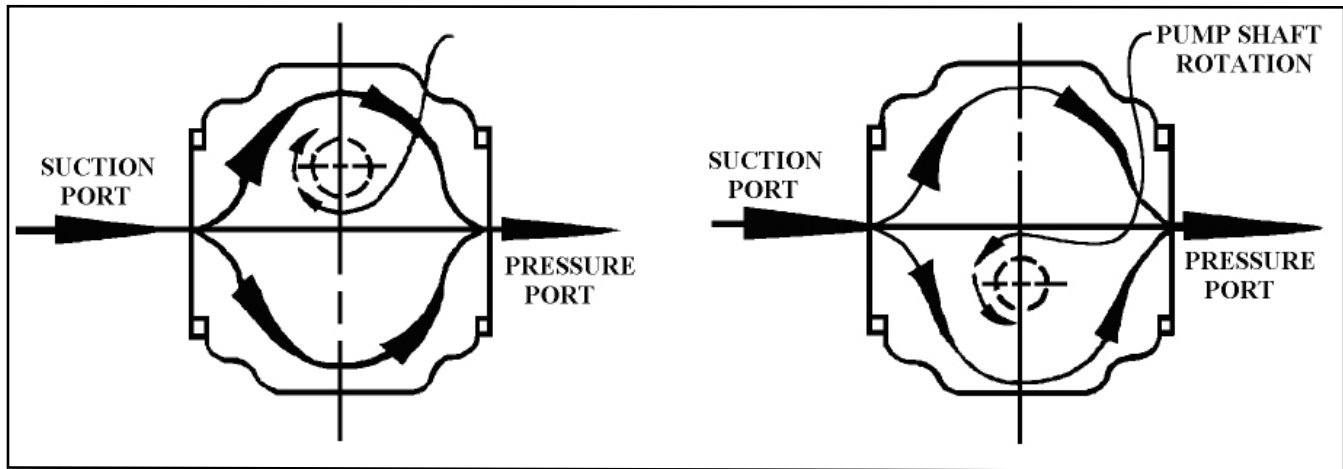


Figure 4- Hydraulic Pump Installation

Use thread sealer on all fittings, except "O" ring and JIC adapters, "O" ring valves and motors, etc. When using thread sealer, do not put it on the first three threads of the fitting. Too much on the fitting or on the first three threads will force it into the oil stream where it could damage the system.

Assemble system as shown in *Hydraulics* parts list in operator's manual. Place hose clamps as needed to keep hoses away from hot or moving parts. Do not let hoses hang so low as to be snagged. Do not stretch hoses tight.

The hydraulic hoses required are as follows:

Pressure Line: Four wire braid hose: high pressure hose supplied by dealer.

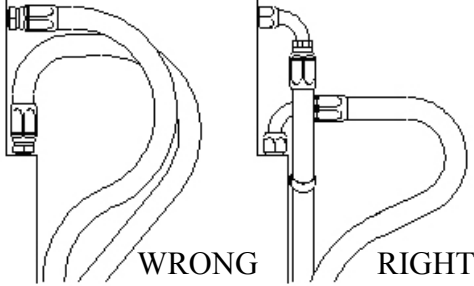
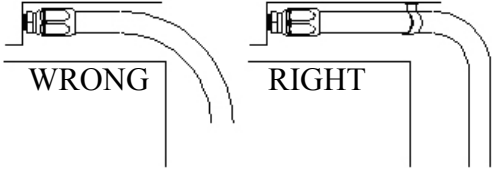
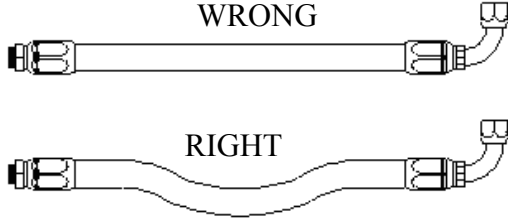
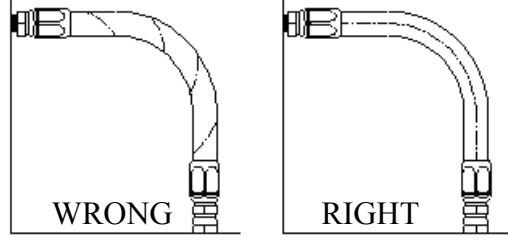
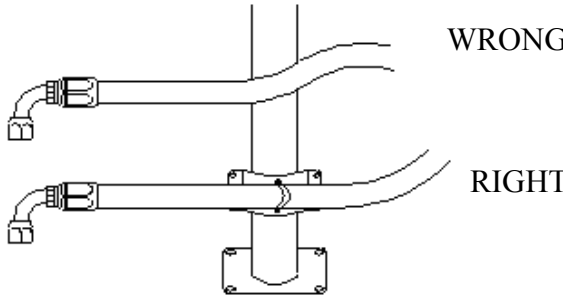
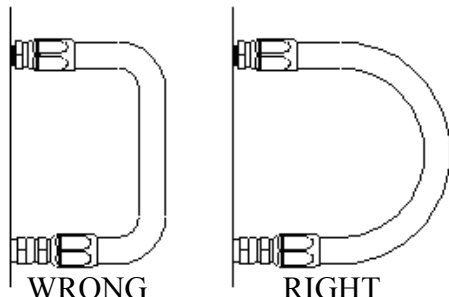
Suction Line: Single spiral wire reinforced to be cut to length. Fittings to be assembled with double hose clamps.

All Return Lines: Double cotton braid with crimped end fittings.

**WARNING**

Do not use one manufacturer's hose with another manufacturer's fittings! Such will void any warranty and may cause premature burst or leak of hydraulic fluids! Severe injury and/or fire could result!

Installation Guide

	
<p>Use elbows and adapters in the installation to relieve strain on the assembly, and to provide easier and neater installations that are accessible for inspection and maintenance. Remember that metal end fittings cannot be considered as part of the flexible portion of the assembly.</p>	<p>Install hose runs to avoid rubbing or abrasion. Clamps are often needed to support long runs of hose or to keep hose away from moving parts. It is important that the clamps be of the correct size. A clamp that is too large will allow the hose to move in the clamp causing abrasion at this point.</p>
	
<p>In straight hose installations allow enough slack in the hose line to provide for changes in length that will occur when pressure is applied. This change in length can be from +2% to -4%.</p>	<p>Do not twist hose during installation. This can be determined by the printed layline on the hose. Pressure applied to a twisted hose can cause hose failure or loosening of the connections.</p>
	
<p>Keep hose away from hot parts. High ambient temperature will shorten hose life. If you cannot route it away from the heat source, insulate it.</p>	<p>Keep the bend radii of the hose as large as possible to avoid hose collapsing and restriction of flow. Follow catalog specs on minimum bend radii.</p>

(Used with the permission of The Weatherhead Company.)

INSTALLATION



Hydraulic Drain Lines

See *Pump Hydraulics* parts list in operator's manual for illustrations.
If equipped, see *Cooler Hydraulics* parts list in operator's manual for illustrations.

Hydraulics		Route drain line from:
Standard Hydraulics	With PWM Valve	Left-Hand Spinner Motor to PWM Valve to Hydraulic Reservoir
	With Manual Valve	Left-Hand Spinner Motor to Hydraulic Reservoir
High Performance Hydraulics	With PWM Valve	Left-Hand Spinner Motor to Conveyor Motor to PWM Valve to Hydraulic Reservoir
	With Manual Valve	Left-Hand Spinner Motor to Conveyor Motor to Hydraulic Reservoir

ELECTRICAL CONNECTIONS

Connect all electrical control circuits. The supply conductor should be connected directly to the battery. All wiring should be approved automotive insulated wire, supported adequately with insulating ties or straps, and located where it will not interfere with any control or access. Make sure wiring does not contact any moving parts or sharp edge and is kept away from any hydraulic line or any heated part.

LIGHT INSTALLATION**CAUTION**

All holes in truck cab walls, floor and firewall are to be grommeted, plugged and sealed to prevent entrance of engine fumes, dust, dirt, water and noise.

Light installation must comply with all applicable requirements prescribed by FMVSS/CMVSS 108, ASABE S279, state and local regulations.

SPINNER SENSOR

The spinner sensor must be mounted under the right-hand spinner disc in holes provided. Rotate disc so one of the cap screws is directly above the sensor. Position sensor 1/8-inch (.32cm) or less below cap screw and tighten sensor hardware. If the distance between the sensor and spinner cap screw is more than 1/8 inch (.32cm), the sensor may not get a good RPM reading. See *Spinner Sensor* parts list in operator's manual for illustration.

FILLING HYDRAULIC SYSTEM

NOTICE! DO NOT attempt to run pump without first filling hydraulic oil reservoir and opening suction line gate valve, or pump may be ruined.

Fill reservoir with hydraulic oil as specified in the *Lubricant & Hydraulic Oil Specifications* section of operator's manual. Be sure oil is clean, free from dirt, water and other contaminants.

Lubricate all points requiring lubrication per *Lubrication Chart* in operator's manual.

CHECKING INSTALLATION

See *Initial Start-Up* procedure in operator's manual.

